

City of Bradford Metropolitan
District Council

Green Belt Selective Review

Green Belt Assessment

Issue | 8 November 2019

This report takes into account the particular instructions and requirements of our client.

It is not intended for and should not be relied upon by any third party and no responsibility is undertaken to any third party.

Job number 268100-00

Ove Arup & Partners Ltd
Admiral House Rose Wharf
78 East Street
Leeds LS9 8EE
United Kingdom
www.arup.com

ARUP

Document verification

ARUP

Job title		Green Belt Selective Review		Job number	
Document title		Green Belt Assessment		File reference	
Document ref					
Revision	Date	Filename			
Draft 1	14 Aug 2019	Description	First draft		
			Prepared by	Checked by	Approved by
		Name	Sarah Lewis		
		Signature			
Draft 2	12 Sept 2019	Filename			
		Description	Draft for Client Issue		
			Prepared by	Checked by	Approved by
		Name	Sarah Lewis	Nicole Harrison	Nicole Harrison
		Signature			
Issue	8 Nov 2019	Filename	Bradford Green Belt Assessment Report - Issue 08.11.19.docx		
		Description	Final Issue		
			Prepared by	Checked by	Approved by
		Name	Hannah Brown	Sarah Lewis	Laura Marchant
		Signature			
		Filename			
		Description			
			Prepared by	Checked by	Approved by
		Name			
		Signature			
Issue Document verification with document					
<input checked="" type="checkbox"/>					

Contents

1	Introduction	1
1.1	Overview	1
1.2	Purpose of this Report	1
1.3	Green Belt Parcels	1
1.4	Contribution to Green Belt Purposes	2
1.4.1	Green Belt Purposes	2
1.4.2	Assessment Framework	3
2	Green Belt Selective Review Conclusions	4
2.1	Overview	4
2.2	Selective Review Summary	4
2.3	Green Belt Purpose Plans	12
3	Next Steps	18
	Appendix A	19
	Parcel Assessments	19

1 Introduction

1.1 Overview

In April 2019, Ove Arup and Partners ('Arup') was appointed by the City of Bradford Metropolitan District Council ('CBMDC') to prepare a Green Belt Selective Review.

A selective review of Green Belt boundaries has been undertaken as part of the Local Plan process. The Core Strategy (adopted July 2017) Strategic Core Policy 7 directed the Selective Review confirming:

"any changes to Green Belt will be delivered by a selective review of Green Belt boundaries in locations that would not undermine the strategic function of Green Belt land". (SC7, June 2017).

The purpose of this selective Green Belt Review is to independently and objectively assess the extent to which areas of the Bradford Green Belt (as identified in the Stage 1 Bradford Green Belt Selective Review Methodology Paper, June 2019) meet the five purposes of the Green Belt as defined within the National Planning Policy Framework (NPPF, 2019). Paragraph 136 of the NPPF states:

'Once established, Green Belt boundaries should only be altered where exceptional circumstances are fully evidenced and justified, through the preparation or updating of plans.' (NPPF)'

1.2 Purpose of this Report

This Green Belt Selective Review report should be read alongside the Bradford Green Belt Selective Review Methodology Paper, June 2019.

This report provides a summary for each of the 314 Green Belt parcels identified for the Selective Review and includes appraisal proformas in Appendix A: 2019 Parcel Assessments. This report considers how the parcels perform against the five purposes of the Green Belt as set out in NPPF, 2019.

This report does not provide a judgement or any recommendations as to whether these parcels or related sites should be released from the Green Belt. This process will be undertaken by CBMDC along with other evidence base documents as part of the site selection process to inform the Local Plan.

1.3 Green Belt Parcels

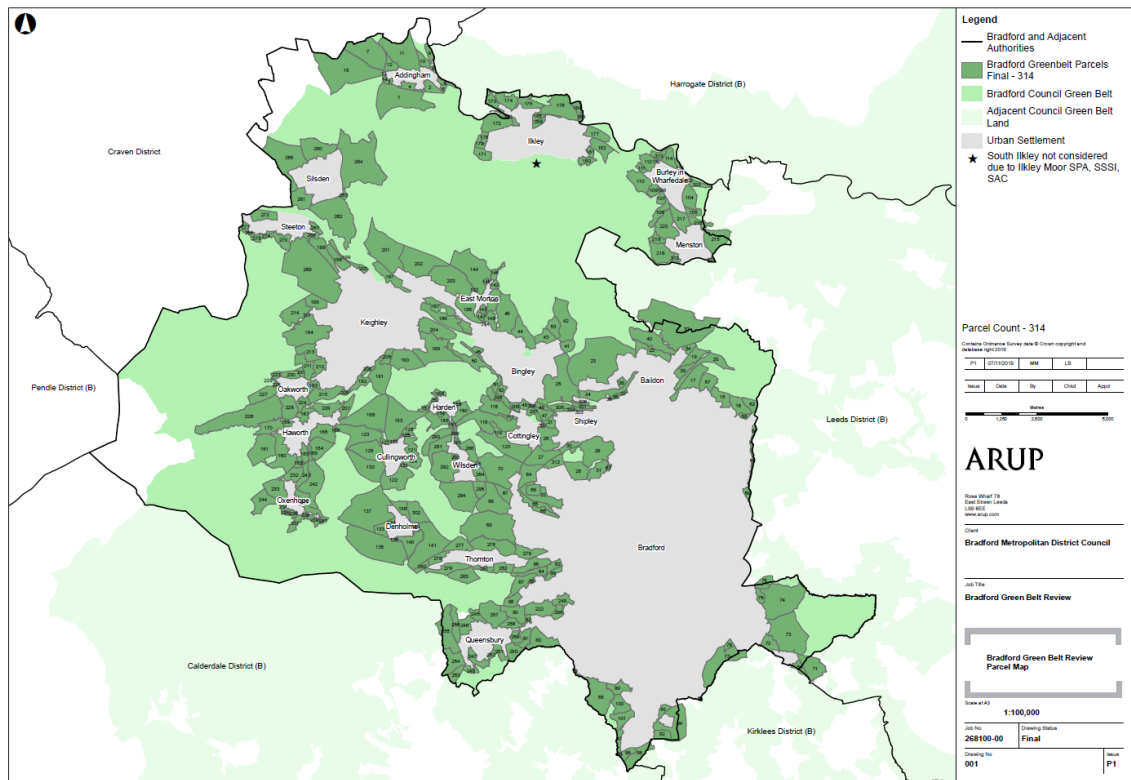
The following plan shows the 314 Green Belt parcels which have been taken forward for appraisal under the Selective Review using the parcel identification process set out in the Bradford Green Belt Selective Review Methodology Paper, June 2019.

The key points to note are:

- All parcels appraised under the Selective Review are adjacent to an ‘inset settlement’ boundary¹; and
- Where possible, parcels are drawn to the nearest defensible boundary.

The inset boundaries have been defined based on the inner Green Belt boundary provided by Bradford Council².

Figure 1: Bradford Selective Review Green Belt Parcels



1.4 Contribution to Green Belt Purposes

1.4.1 Green Belt Purposes

The 314 parcels have been appraised against the local interpretation of the five Green Belt purposes as set out in the Bradford Green Belt Selective Review Methodology Paper, June 2019, these are:

Purpose 1: to check the unrestricted sprawl of large built-up areas;

Purpose 2: to prevent neighbouring towns merging into one another;

Purpose 3: to assist in safeguarding the countryside from encroachment;

Purpose 4: to preserve the setting and special character of historic towns; and

¹ Within 50 metres of the inner Green Belt boundary with an inset settlement.

² Bradford UDP Green Belt Boundary.

Purpose 5: to assist in urban regeneration, by encouraging the recycling of derelict and other urban land.

1.4.2 Assessment Framework

The parcel appraisal has applied a consistent approach and is based on an interpretation of the five purposes of Green Belt as set out above. For each purpose a number of robust criteria were developed which require quantitative and qualitative responses and an element of professional judgement. The criteria used to appraise each purpose and the assessment framework are detailed in the Bradford Green Belt Selective Review Methodology Paper, June 2019.

The assessment framework has been used to conclude the level of contribution the parcel makes to each Green Belt purpose, this is summarised in Table 1 below.

Level of Contribution to Green Belt Purpose
No Contribution – the parcel makes no contribution to the Green Belt purpose.
Low – the parcel makes a marginal contribution to an element of the Green Belt.
Moderate – on the whole the parcel contributes to the Green Belt purpose however does not fulfil all elements.
Major – the parcel contributes to the purpose in a strong way, whereby removal of the parcel from the Green Belt would detrimentally undermine this purpose.

Each of the five purposes set out in the NPPF is equally important, therefore no weighting or aggregation of scores was undertaken. An element of professional judgement has been used to conclude the level of contribution for each purpose, however this is guided by the assessment framework in the Bradford Green Belt Selective Review Methodology Paper, June 2019 to ensure a consistent approach across the Green Belt Selective Review.

2 Green Belt Selective Review Conclusions

2.1 Overview

This section sets out the findings of the Stage 1 and 2 Green Belt Selective Review. A total of 314 parcels were drawn around all settlements inset into the Green Belt, the parcels were then appraised against the five purposes of the Green Belt. This selective review takes full account of the history of the Bradford District Green Belt and applies locally specific considerations to each of the five Green Belt purposes.

Table 2 provides a summary of the relative contribution of each parcel to the Green Belt purposes. Figures 2 to 6 provide comparative maps of the level of contribution of the parcels for each purpose. Appendix A contains the completed parcel appraisal proformas.

2.2 Selective Review Summary

The following table provides a high-level summary of the contribution that the 314 parcels make to each Green Belt purpose.

Table 1: Summary of the relative contribution of each parcel to the Green Belt Purposes

Enter Parcel Reference	P1: Overall for Purpose 1	P2: Overall for Purpose 2	P3: Overall for Purpose 3	P4: Overall for Purpose 4	P5: Criteria 1: Green Belt parcel assists in urban regeneration
1	No Contribution	Major	Major	Moderate	Moderate
2	No Contribution	Low	Moderate	Major	Moderate
3	No Contribution	Low	Moderate	Low	Moderate
4	No Contribution	No Contribution	Moderate	Major	Moderate
5	No Contribution	Low	Moderate	Major	Moderate
6	No Contribution	Major	Low	Major	Moderate
7	No Contribution	Major	Moderate	Moderate	Moderate
8	No Contribution	No Contribution	Major	Low	Moderate
9	No Contribution	No Contribution	Major	Low	Moderate
10	No Contribution	No Contribution	Major	Low	Moderate
11	No Contribution	Low	Major	Major	Moderate
12	No Contribution	Low	Moderate	Low	Moderate
13	No Contribution	Low	Major	Low	Moderate
14	No Contribution	Low	Moderate	Low	Moderate
15	No Contribution	Major	Major	Low	Moderate
16	Major	Moderate	Moderate	Major	Moderate
17	Major	Moderate	Moderate	Major	Moderate
18	Moderate	Low	Major	Major	Moderate
19	Major	Moderate	Moderate	Low	Moderate
20	Major	Moderate	Moderate	Major	Moderate
21	Moderate	Major	Moderate	Low	Moderate

Enter Parcel Reference	P1: Overall for Purpose 1	P2: Overall for Purpose 2	P3: Overall for Purpose 3	P4: Overall for Purpose 4	P5: Criteria 1: Green Belt parcel assists in urban regeneration
22	No Contribution	Low	Moderate	Moderate	Moderate
23	No Contribution	Moderate	Major	Major	Moderate
24	No Contribution	No Contribution	Moderate	Major	Moderate
25	Moderate	Moderate	Moderate	Major	Moderate
26	Major	Moderate	Moderate	Low	Moderate
27	Major	Major	Moderate	Low	Moderate
28	Moderate	Low	Moderate	Low	Moderate
29	Moderate	Moderate	Moderate	Moderate	Moderate
30	Moderate	Low	Moderate	Moderate	Moderate
31	Moderate	Low	Major	Moderate	Moderate
32	Moderate	No Contribution	Moderate	Low	Moderate
33	No Contribution	Major	Moderate	Moderate	Moderate
34	No Contribution	Low	Moderate	Low	Moderate
35	No Contribution	No Contribution	Major	Major	Moderate
36	No Contribution	No Contribution	Moderate	Major	Moderate
37	No Contribution	No Contribution	Moderate	Major	Moderate
38	No Contribution	No Contribution	Low	Low	Moderate
39	Moderate	Moderate	Moderate	Low	Moderate
40	No Contribution	Moderate	Major	Low	Moderate
41	Moderate	Low	Major	Major	Moderate
42	Major	Major	Moderate	Major	Moderate
43	Moderate	Low	Major	Major	Moderate
44	Moderate	Low	Moderate	Low	Moderate
45	Major	Major	Moderate	Major	Moderate
46	Major	Low	Moderate	Moderate	Moderate
47	Major	Major	Moderate	Low	Moderate
48	Moderate	Low	Low	Low	Moderate
49	Major	Major	Low	Major	Moderate
50	Major	Moderate	Major	Moderate	Moderate
51	Major	Major	Moderate	Major	Moderate
52	Moderate	Low	Moderate	Major	Moderate
53	Major	Major	Moderate	Major	Moderate
54	Moderate	Major	Moderate	Low	Moderate
55	Moderate	Low	Major	Low	Moderate
56	Moderate	No Contribution	Major	Low	Moderate
57	Moderate	Low	Moderate	Low	Moderate
58	Moderate	No Contribution	Moderate	Major	Moderate
59	Moderate	Low	Moderate	Low	Moderate
60	Major	Moderate	Major	Low	Moderate
61	Moderate	Major	Major	Moderate	Moderate
62	Major	Moderate	Moderate	Low	Moderate

Enter Parcel Reference	P1: Overall for Purpose 1	P2: Overall for Purpose 2	P3: Overall for Purpose 3	P4: Overall for Purpose 4	P5: Criteria 1: Green Belt parcel assists in urban regeneration
63	Moderate	Low	Major	Moderate	Moderate
64	Moderate	Low	Moderate	Low	Moderate
65	Moderate	No Contribution	Low	Low	Moderate
66	Moderate	No Contribution	Major	Low	Moderate
67	Major	Moderate	Moderate	Low	Moderate
68	Major	Moderate	Moderate	Low	Moderate
69	Major	Moderate	Major	Low	Moderate
70	Moderate	Moderate	Moderate	Moderate	Moderate
71	Major	Major	Moderate	Low	Moderate
72	Moderate	Low	Low	Low	Moderate
73	Moderate	Moderate	Moderate	Low	Moderate
74	Major	Major	Major	Low	Moderate
75	Moderate	Moderate	Moderate	Low	Moderate
76	Moderate	Low	Moderate	Low	Moderate
77	Moderate	Moderate	Major	Low	Moderate
78	Major	Moderate	Moderate	Low	Moderate
79	Moderate	Low	Moderate	Low	Moderate
80	Moderate	Low	Major	Low	Moderate
81	Moderate	Low	Moderate	Low	Moderate
82	Moderate	Major	Moderate	Low	Moderate
83	Low	Low	Major	Low	Moderate
84	Moderate	Moderate	Moderate	Major	Moderate
85	Moderate	Moderate	Moderate	Moderate	Moderate
86	Moderate	Low	Major	Major	Moderate
87	Moderate	Major	Major	Major	Moderate
88	Moderate	Low	Moderate	Low	Moderate
89	Low	Low	Major	Moderate	Moderate
90	Moderate	Moderate	Moderate	Low	Moderate
91	Moderate	Major	Moderate	Low	Moderate
92	Moderate	Moderate	Moderate	Low	Moderate
93	Moderate	Major	Moderate	Low	Moderate
94	Moderate	Moderate	Major	Low	Moderate
95	Major	Major	Moderate	Low	Moderate
96	Major	Major	Moderate	Low	Moderate
97	Major	Major	Moderate	Low	Moderate
98	Major	Major	Moderate	Low	Moderate
99	Moderate	Low	Major	Low	Moderate
100	Moderate	Low	Major	Low	Moderate
101	Moderate	Low	Moderate	Low	Moderate
102	No Contribution	Low	Major	Major	Moderate
103	No Contribution	Major	Moderate	Major	Moderate

Enter Parcel Reference	P1: Overall for Purpose 1	P2: Overall for Purpose 2	P3: Overall for Purpose 3	P4: Overall for Purpose 4	P5: Criteria 1: Green Belt parcel assists in urban regeneration
104	No Contribution	Moderate	Major	Major	Moderate
105	No Contribution	Major	Major	Low	Moderate
106	No Contribution	Low	Major	Low	Moderate
107	No Contribution	Low	Moderate	Low	Moderate
108	No Contribution	Low	Low	Low	Moderate
109	No Contribution	Low	Low	Low	Moderate
110	No Contribution	Moderate	Major	Moderate	Moderate
111	No Contribution	Low	Major	Moderate	Moderate
112	No Contribution	Moderate	Major	Low	Moderate
113	No Contribution	Major	Major	Low	Moderate
114	No Contribution	No Contribution	Moderate	Major	Moderate
115	No Contribution	No Contribution	Low	Major	Moderate
116	No Contribution	Low	Major	No Contribution	Moderate
117	No Contribution	Low	Major	No Contribution	Moderate
118	No Contribution	Low	Major	No Contribution	Moderate
119	No Contribution	Low	Major	No Contribution	Moderate
120	No Contribution	Moderate	Moderate	No Contribution	Moderate
121	No Contribution	Low	Moderate	Low	Moderate
122	No Contribution	Moderate	Moderate	Low	Moderate
123	No Contribution	Moderate	Moderate	Low	Moderate
124	No Contribution	Moderate	Moderate	Low	Moderate
125	No Contribution	Low	Major	Low	Moderate
126	No Contribution	Moderate	Major	Low	Moderate
127	No Contribution	Low	Moderate	Major	Moderate
128	No Contribution	Major	Major	Moderate	Moderate
129	No Contribution	Major	Moderate	Low	Moderate
130	No Contribution	Moderate	Moderate	Low	Moderate
131	No Contribution	Low	Moderate	Low	Moderate
132	No Contribution	Low	Moderate	Low	Moderate
133	No Contribution	Low	Moderate	No Contribution	Moderate
134	No Contribution	Low	Major	No Contribution	Moderate
135	No Contribution	Moderate	Major	No Contribution	Moderate
136	No Contribution	Low	Moderate	No Contribution	Moderate
137	No Contribution	Moderate	Moderate	No Contribution	Moderate
138	No Contribution	Moderate	Moderate	No Contribution	Moderate
139	No Contribution	Low	Moderate	No Contribution	Moderate
140	No Contribution	Moderate	Moderate	No Contribution	Moderate
141	No Contribution	Low	Moderate	No Contribution	Moderate
142	No Contribution	Low	Major	Major	Moderate
143	No Contribution	Low	Major	Major	Moderate
144	No Contribution	Moderate	Major	Major	Moderate

Enter Parcel Reference	P1: Overall for Purpose 1	P2: Overall for Purpose 2	P3: Overall for Purpose 3	P4: Overall for Purpose 4	P5: Criteria 1: Green Belt parcel assists in urban regeneration
145	No Contribution	Low	Low	Low	Moderate
146	No Contribution	Low	Moderate	Low	Moderate
147	Major	Major	Moderate	Moderate	Moderate
148	Major	Moderate	Major	Major	Moderate
149	No Contribution	Moderate	Major	Major	Moderate
150	No Contribution	Moderate	Moderate	No Contribution	Moderate
151	No Contribution	Low	Low	No Contribution	Moderate
152	No Contribution	Low	Major	No Contribution	Moderate
153	No Contribution	Major	Moderate	Moderate	Moderate
154	No Contribution	Moderate	Major	No Contribution	Moderate
155	No Contribution	Moderate	Major	No Contribution	Moderate
156	No Contribution	Moderate	Moderate	No Contribution	Moderate
157	No Contribution	Low	Moderate	No Contribution	Moderate
158	No Contribution	Low	Moderate	No Contribution	Moderate
159	No Contribution	Moderate	Major	Major	Moderate
160	No Contribution	Low	Moderate	Major	Moderate
161	No Contribution	Moderate	Major	Major	Moderate
162	No Contribution	Low	Moderate	Major	Moderate
163	No Contribution	Moderate	Major	Major	Moderate
164	No Contribution	Major	Moderate	Moderate	Moderate
165	No Contribution	Moderate	Moderate	Low	Moderate
166	No Contribution	Moderate	Moderate	Moderate	Moderate
167	No Contribution	Moderate	Moderate	Low	Moderate
168	No Contribution	Moderate	Moderate	Low	Moderate
169	No Contribution	Moderate	Moderate	Moderate	Moderate
170	No Contribution	Low	Major	Major	Moderate
171	Moderate	Low	Moderate	Major	Moderate
172	Major	Moderate	Moderate	Major	Moderate
173	Moderate	Low	Major	Low	Moderate
174	Major	Low	Major	Major	Moderate
175	Moderate	No Contribution	Major	Major	Moderate
176	Moderate	No Contribution	Major	Major	Moderate
177	Moderate	Moderate	Major	Moderate	Moderate
178	Moderate	Low	Major	Major	Moderate
179	Moderate	Low	Major	Major	Moderate
180	Moderate	Low	Moderate	Low	Moderate
181	Moderate	Low	Major	Low	Moderate
182	Moderate	Low	Moderate	Low	Moderate
183	Major	No Contribution	Moderate	Moderate	Moderate
184	Major	No Contribution	Major	Moderate	Moderate
185	Moderate	No Contribution	Low	Major	Moderate

Enter Parcel Reference	P1: Overall for Purpose 1	P2: Overall for Purpose 2	P3: Overall for Purpose 3	P4: Overall for Purpose 4	P5: Criteria 1: Green Belt parcel assists in urban regeneration
186	Major	Moderate	Major	Major	Moderate
187	Moderate	Major	Major	Low	Moderate
188	Major	Major	Moderate	Low	Moderate
189	Moderate	Moderate	Major	Moderate	Moderate
190	Major	Moderate	Moderate	Low	Moderate
191	Moderate	Moderate	Moderate	Moderate	Moderate
192	Moderate	Low	Moderate	Moderate	Moderate
193	Major	Major	Moderate	Major	Moderate
194	Moderate	Low	Major	Major	Moderate
195	Moderate	Low	Moderate	Moderate	Moderate
196	Moderate	Moderate	Moderate	Low	Moderate
197	Moderate	Low	Moderate	Major	Moderate
198	Major	Major	Major	Moderate	Moderate
199	Major	Major	Moderate	Moderate	Moderate
200	Moderate	Moderate	Low	Low	Moderate
201	Major	Moderate	Major	Major	Moderate
202	Major	Moderate	Moderate	Moderate	Moderate
203	Moderate	Major	Major	Major	Moderate
204	Major	Moderate	Major	Moderate	Moderate
205	Moderate	Low	Moderate	Low	Moderate
206	Moderate	Low	Moderate	Moderate	Moderate
207	No Contribution	Moderate	Moderate	Low	Moderate
208	Moderate	Moderate	Moderate	Low	Moderate
209	No Contribution	Moderate	Moderate	Low	Moderate
210	Major	Major	Moderate	Major	Moderate
211	Major	Moderate	Moderate	Major	Moderate
212	Moderate	Low	Major	Low	Moderate
213	Major	Moderate	Major	Low	Moderate
214	Major	Major	Major	Major	Moderate
215	No Contribution	Major	Moderate	Moderate	Moderate
216	No Contribution	Moderate	Moderate	Low	Moderate
217	No Contribution	Moderate	Moderate	Low	Moderate
218	No Contribution	Low	Major	Low	Moderate
219	No Contribution	Low	Moderate	Moderate	Moderate
220	No Contribution	Low	Major	Major	Moderate
221	No Contribution	Moderate	Low	Low	Moderate
222	Moderate	No Contribution	Moderate	Moderate	Moderate
223	No Contribution	Low	Major	Low	Moderate
224	No Contribution	Moderate	Moderate	Major	Moderate
225	No Contribution	Major	Moderate	Major	Moderate
226	No Contribution	Major	Moderate	Moderate	Moderate

Enter Parcel Reference	P1: Overall for Purpose 1	P2: Overall for Purpose 2	P3: Overall for Purpose 3	P4: Overall for Purpose 4	P5: Criteria 1: Green Belt parcel assists in urban regeneration
227	No Contribution	Low	Major	Major	Moderate
228	No Contribution	No Contribution	Major	Moderate	Moderate
229	No Contribution	No Contribution	Major	Moderate	Moderate
230	No Contribution	Low	Major	Low	Moderate
231	No Contribution	Low	Major	Low	Moderate
232	No Contribution	Moderate	Moderate	Major	Moderate
233	No Contribution	Low	Moderate	Major	Moderate
234	No Contribution	No Contribution	Moderate	Major	Moderate
235	No Contribution	No Contribution	Major	Major	Moderate
236	No Contribution	No Contribution	Major	Major	Moderate
237	No Contribution	No Contribution	Major	Major	Moderate
238	No Contribution	No Contribution	Moderate	Major	Moderate
239	No Contribution	Low	Moderate	Major	Moderate
240	No Contribution	Low	Moderate	Major	Moderate
241	No Contribution	Moderate	Moderate	Major	Moderate
242	No Contribution	Major	Moderate	Major	Moderate
243	No Contribution	Major	Moderate	Major	Moderate
244	No Contribution	No Contribution	Major	Major	Moderate
245	No Contribution	Low	Moderate	Low	Moderate
246	No Contribution	No Contribution	Moderate	Low	Moderate
247	No Contribution	Moderate	Moderate	Low	Moderate
248	No Contribution	Moderate	Moderate	Low	Moderate
249	Low	No Contribution	Low	Low	Moderate
250	No Contribution	Moderate	Major	Low	Moderate
251	No Contribution	Low	Moderate	Low	Moderate
252	No Contribution	Low	Moderate	Low	Moderate
253	No Contribution	Major	Moderate	Moderate	Moderate
254	No Contribution	Major	Moderate	Low	Moderate
255	No Contribution	Major	Moderate	Low	Moderate
256	No Contribution	Low	Moderate	Low	Moderate
257	No Contribution	Low	Moderate	Moderate	Moderate
258	Major	Major	Major	Moderate	Moderate
259	Major	Major	Moderate	Low	Moderate
260	No Contribution	Low	Major	Moderate	Moderate
261	No Contribution	Moderate	Major	Major	Moderate
262	No Contribution	Moderate	Major	Moderate	Moderate
263	No Contribution	Low	Major	Major	Moderate
264	No Contribution	Moderate	Major	Major	Moderate
265	No Contribution	Low	Major	Major	Moderate
266	No Contribution	Low	Moderate	Low	Moderate
267	No Contribution	Moderate	Major	Major	Moderate

Enter Parcel Reference	P1: Overall for Purpose 1	P2: Overall for Purpose 2	P3: Overall for Purpose 3	P4: Overall for Purpose 4	P5: Criteria 1: Green Belt parcel assists in urban regeneration
268	No Contribution	Low	Major	Major	Moderate
269	Major	Major	Major	Major	Moderate
270	No Contribution	Low	Moderate	Major	Moderate
271	No Contribution	Major	Major	Low	Moderate
272	No Contribution	Low	Major	Low	Moderate
273	No Contribution	Low	Major	Moderate	Moderate
274	No Contribution	Moderate	Major	Moderate	Moderate
275	Moderate	Major	Major	Low	Moderate
276	No Contribution	Major	Major	Low	Moderate
277	No Contribution	Low	Moderate	Low	Moderate
278	No Contribution	Moderate	Moderate	Moderate	Moderate
279	No Contribution	Low	Moderate	Moderate	Moderate
280	No Contribution	Moderate	Moderate	Moderate	Moderate
281	No Contribution	Low	Major	Major	Moderate
282	No Contribution	Low	Moderate	Major	Moderate
283	No Contribution	Low	Moderate	Moderate	Moderate
284	No Contribution	Low	Moderate	Moderate	Moderate
285	No Contribution	Low	Major	Low	Moderate
286	No Contribution	Low	Major	Major	Moderate
287	No Contribution	Low	Major	Low	Moderate
288	No Contribution	Low	Major	Low	Moderate
289	No Contribution	Major	Major	Low	Moderate
290	No Contribution	Major	Major	Moderate	Moderate
291	No Contribution	Major	Major	Moderate	Moderate
292	No Contribution	Moderate	Moderate	Major	Moderate
293	No Contribution	Low	Moderate	Major	Moderate
294	No Contribution	Moderate	Moderate	Major	Moderate
295	No Contribution	Moderate	Moderate	Major	Moderate
296	Moderate	No Contribution	Low	Low	Moderate
297	No Contribution	Major	Low	No Contribution	Moderate
298	Major	Major	Moderate	Low	Moderate
299	Moderate	No Contribution	Moderate	Major	Moderate
300	Major	Moderate	Major	Major	Moderate
301	Major	Low	Moderate	Major	Moderate
302	No Contribution	Moderate	Moderate	No Contribution	Moderate
303	Moderate	Low	Moderate	Major	Moderate
304	Major	Low	Moderate	Major	Moderate
305	Major	Moderate	Major	Major	Moderate
306	No Contribution	Low	Moderate	Major	Moderate
307	No Contribution	Major	Major	No Contribution	Moderate
308	Major	Major	Major	Low	Moderate

Enter Parcel Reference	P1: Overall for Purpose 1	P2: Overall for Purpose 2	P3: Overall for Purpose 3	P4: Overall for Purpose 4	P5: Criteria 1: Green Belt parcel assists in urban regeneration
309	Moderate	Major	Moderate	Low	Moderate
310	No Contribution	Low	Major	Low	Moderate
311	Moderate	Low	Moderate	Major	Moderate
312	Moderate	Major	Moderate	Low	Moderate
313	No Contribution	Major	Moderate	Low	Moderate
314	Moderate	No Contribution	Major	Moderate	Moderate

2.3 Green Belt Purpose Plans

Using the information in Table 2, the following plans detail the level of contribution the parcels make to each Green Belt purpose.

Figure 2: Purpose 1: To check the unrestricted sprawl of large built up areas

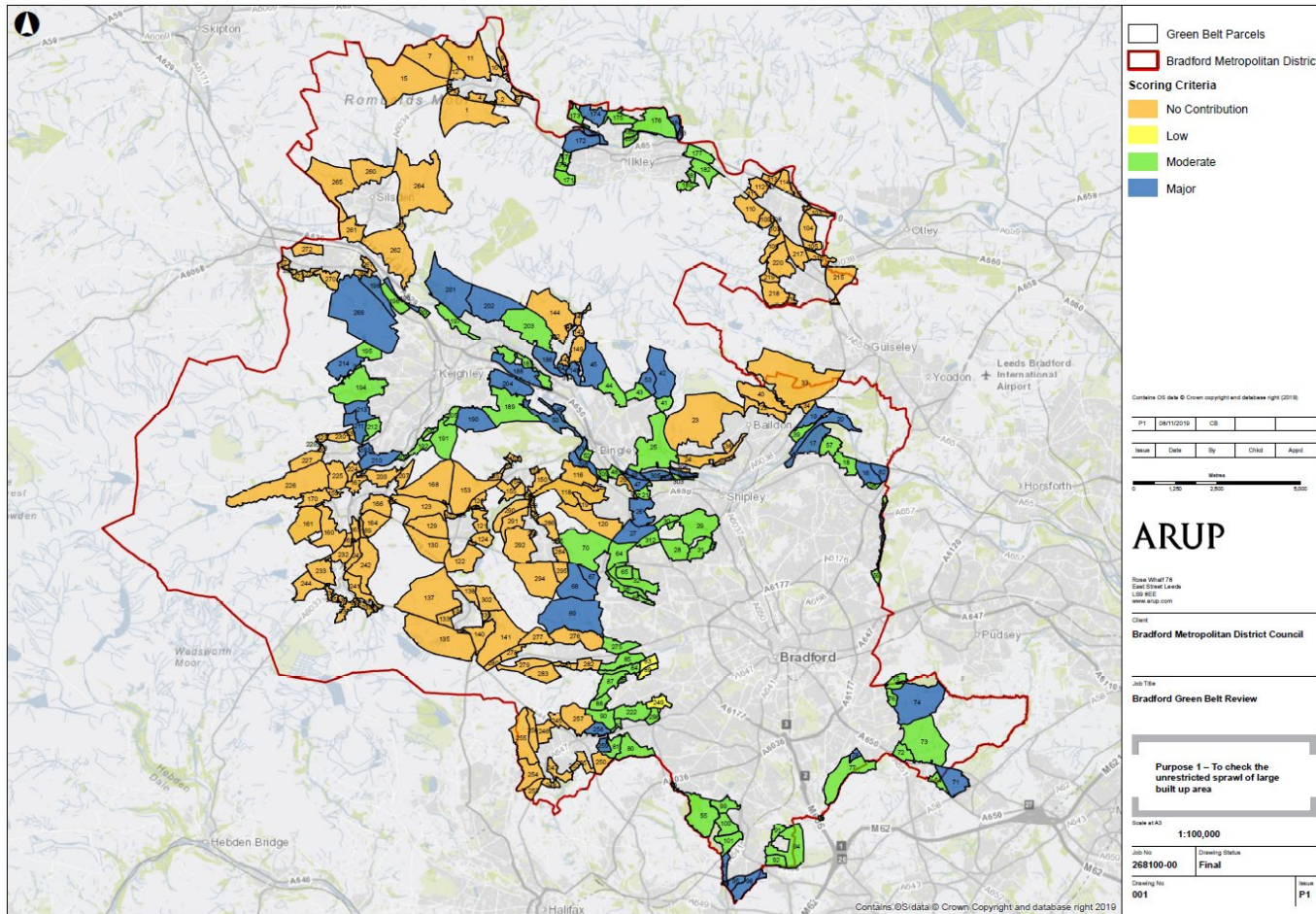


Figure 3: Purpose 2: To prevent neighbouring towns from merging into one another

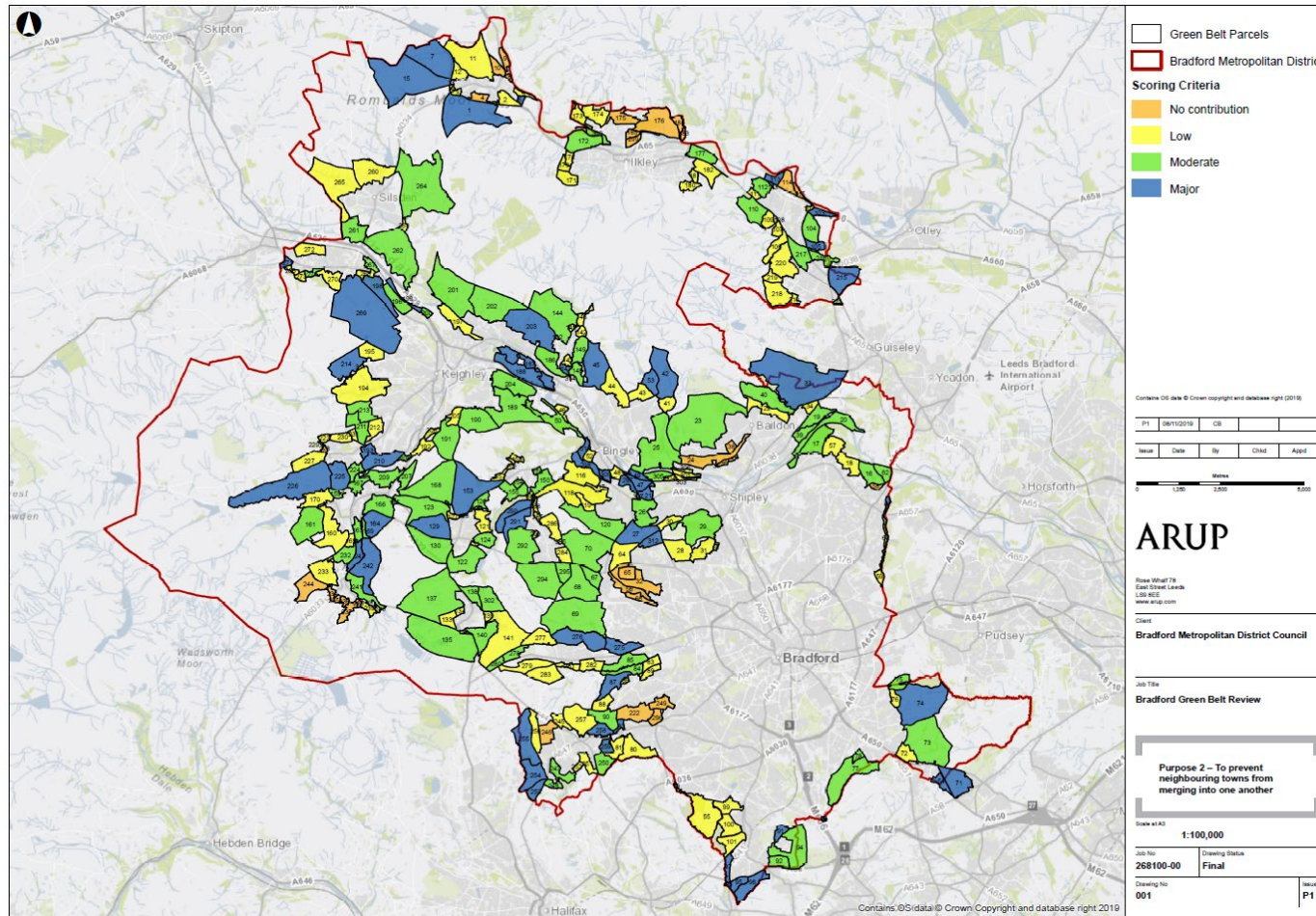


Figure 4: Purpose 3: To assist in safeguarding the countryside from encroachment

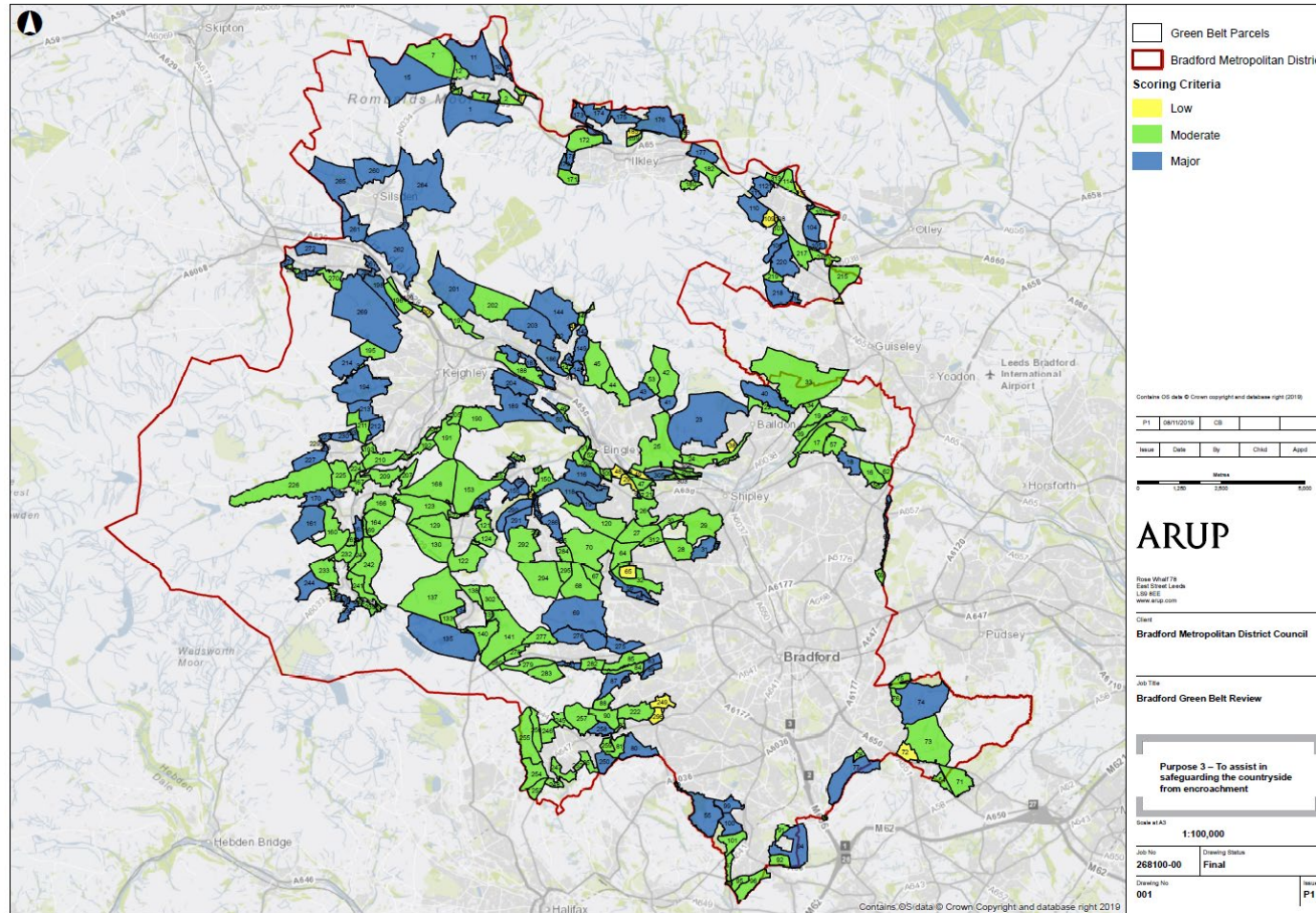


Figure 5: Purpose 4: Preserving the setting and special character of historic towns

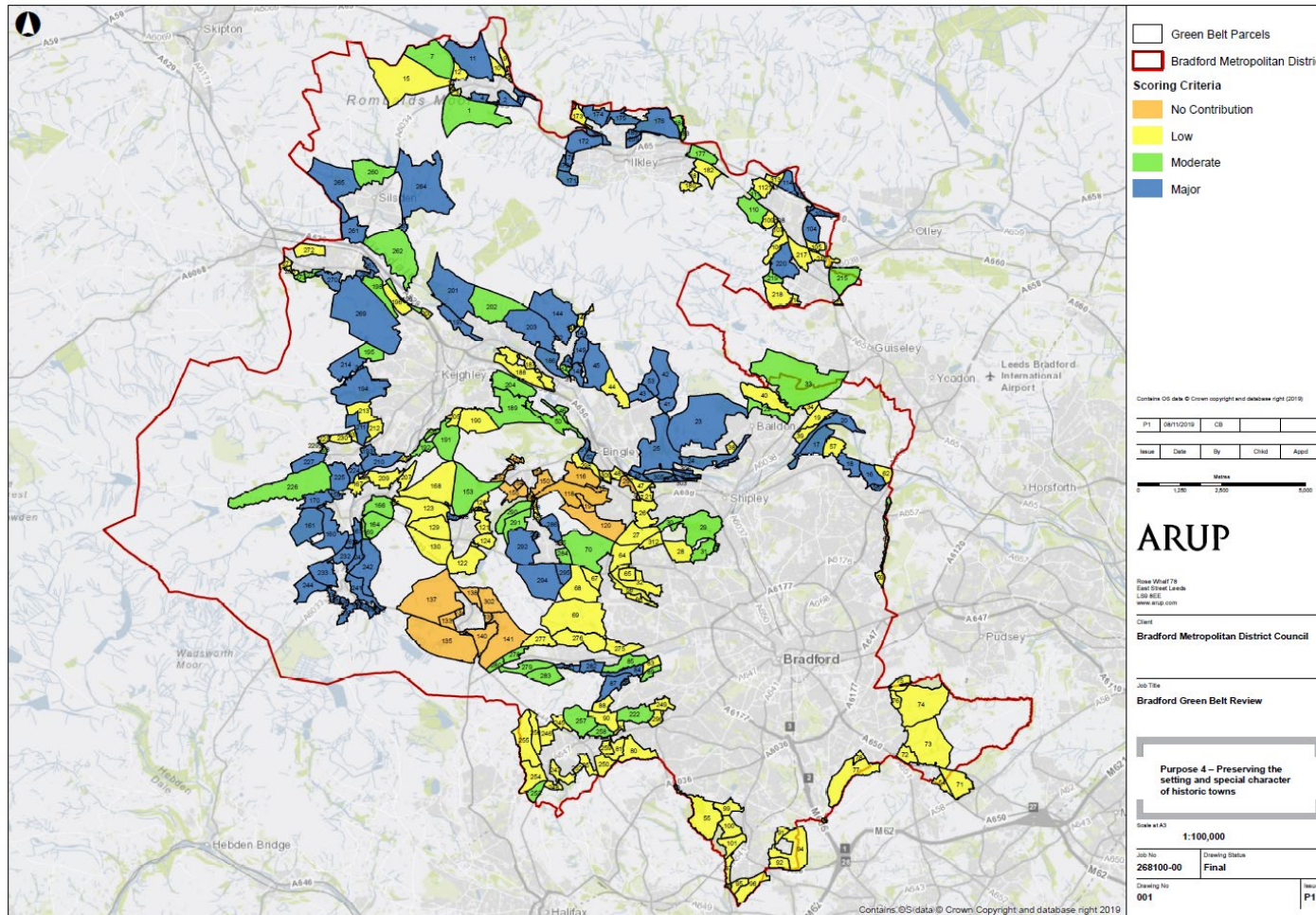
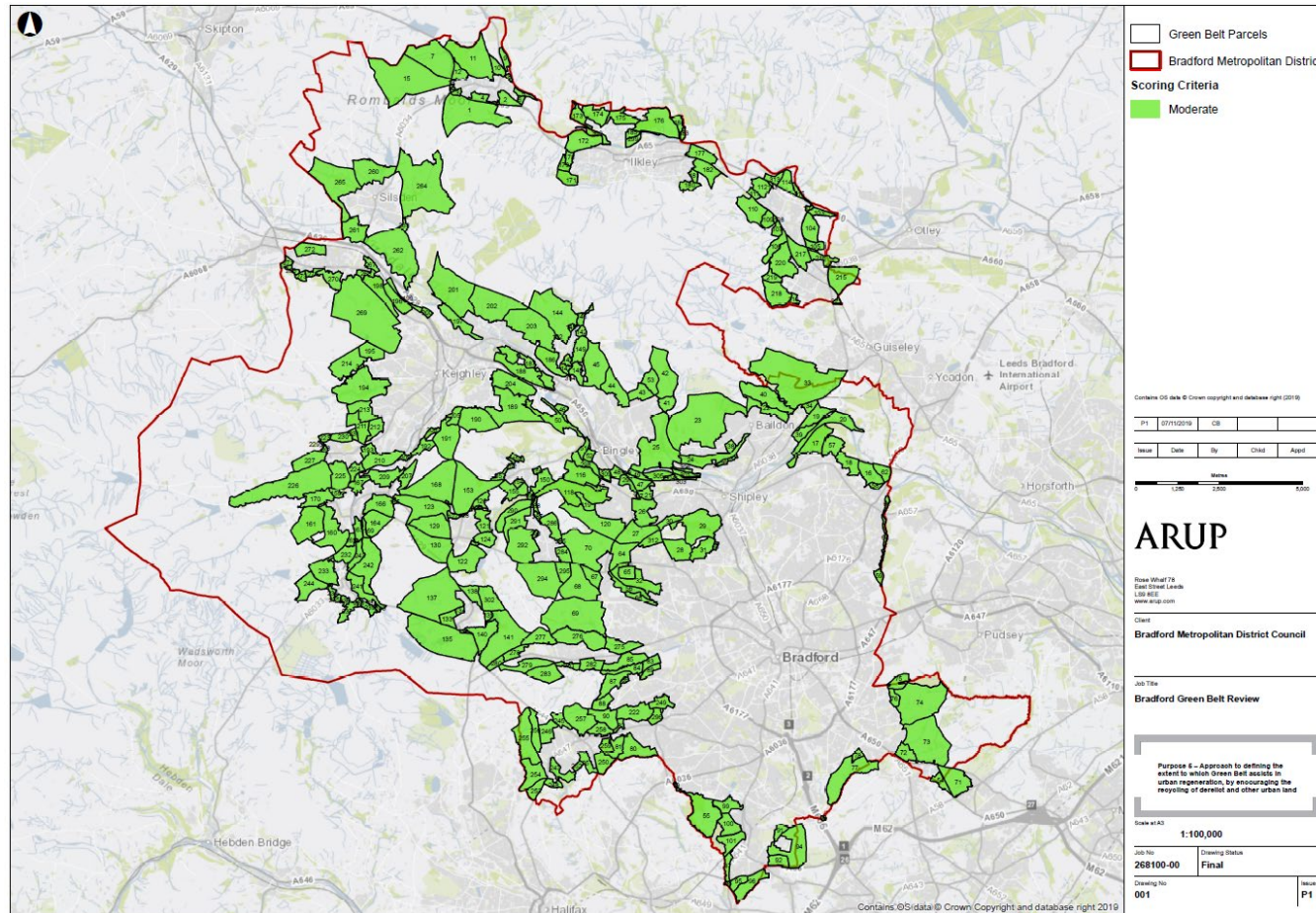


Figure 6: Purpose 5: Approach to defining the extent to which Green Belt assists in urban regeneration, by encouraging the recycling of derelict and other urban land



3 Next Steps

This report provides a comprehensive appraisal of Green Belt parcels which form the Selective Review. It can be used by CBMDC to consider whether any of the Green Belt parcels are taken forward to further review stages.

Any Green Belt parcels selected for further review will be considered through CBMDC's site selection process alongside all non-Green Belt sites. Any resulting Green Belt release will need to demonstrate exceptional circumstances and any case for release will be made through the Local Plan process.

Appendix A

Parcel Assessments

A1
